

PART OF SEC. 1, T.7N., R.1E., & PART OF SEC. 36, T.8N., R.1E., S.L.B.&M.
POWDER MOUNTAIN WEST SUBDIVISION

85

PHASE I

LOTS 1-6, 21-24, 27-31

IN WEBER COUNTY

SCALE 1"=50'

TAXING UNIT 90

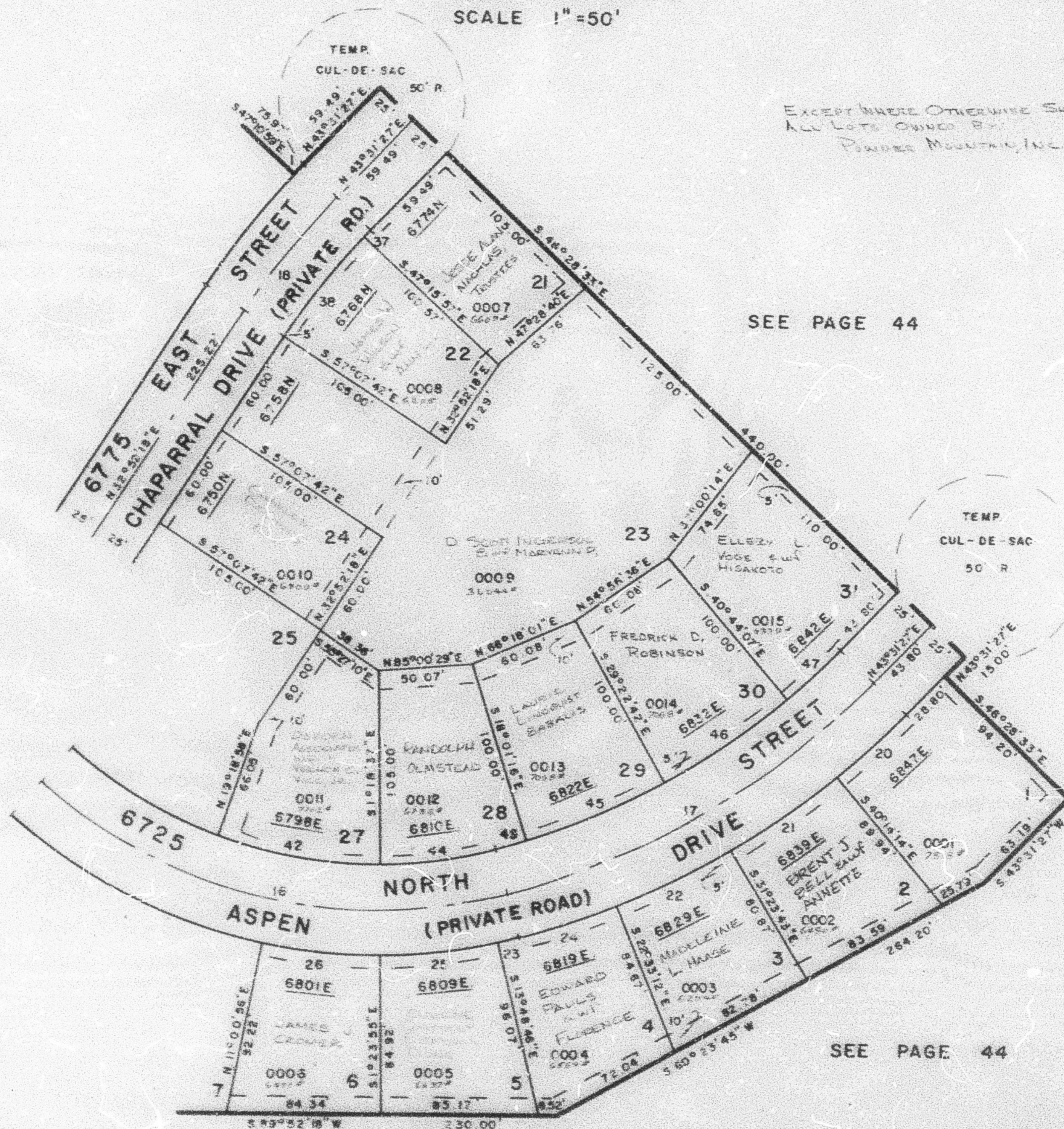
PREFIX: 23-085

EXCEPT WHERE OTHERWISE SHOWN
 ALL LOTS OWNED BY
 POWDER MOUNTAIN, INC.

SEE PAGE 44

SEE PAGE 86

SEE PAGE 44



CURVE DATA

	16	17	18	20	21	22	23	24	25	26	37	38	42	43	44	
A=	0°42'26"	56°5'00"	31°05'51"	10°38'09"	6°14'19"	8°50'31"	8°50'31"	1°33'56"	7°10'30"	12°24'51"	12°24'51"	0°47'24"	9°51'45"	20°37'35"	1°38'34"	14°04'05"
R=	450.00'	275.00'	428.60'	425.00'	453.60'	453.60'	453.60'	300.00'	453.60'	300.00'	300.00'	400.00'	400.00'	250.00'	403.60'	250.00'
ARC	5.55'	289.98'	232.62'	79.02'	49.39'	70.00'	70.00'	5.20'	58.60'	65.00'	65.00'	1.51'	68.65'	90.00'	18.62'	61.38'
T=	2.78'	146.99'	119.25'	39.62'	24.72'	35.07'	35.07'	4.15'	28.44'	32.63'	32.63'	2.76'	54.51'	45.49'	9.31'	30.85'
CH=	5.55'	289.27'	229.78'	78.90'	49.35'	69.93'	69.93'	8.20'	56.77'	64.87'	64.87'	5.51'	68.77'	89.01'	18.62'	61.23'
C.B=	N43°10'14"E	S77°45'12"E	N59°04'25"E	N37°11'55"E	N46°58'36"E	N54°11'01"E	N62°01'35"E	N75°24'18"E	N71°02'03"E	N66°23'40"E	S85°11'30"E	N43°07'45"E	N37°46'11"E	S80°55'49"E	N73°18'01"E	N41°39'20"E
		45	46	47												
A=	11°21'28"	11°21'25"	5°44'26"													
R=	403.50'	403.60'	403.60'													
ARC	80.00'	80.00'	40.44'													
T=	40.13'	40.13'	20.24'													
CH=	79.87'	79.87'	40.42'													
C.B=	N88°50'01"E	N88°58'36"E	N46°23'40"E													

FOR COMPLETE ENG. DATA
 SEE ORIG. DED. PLAT. IN
 BOOK 22, PAGE 45